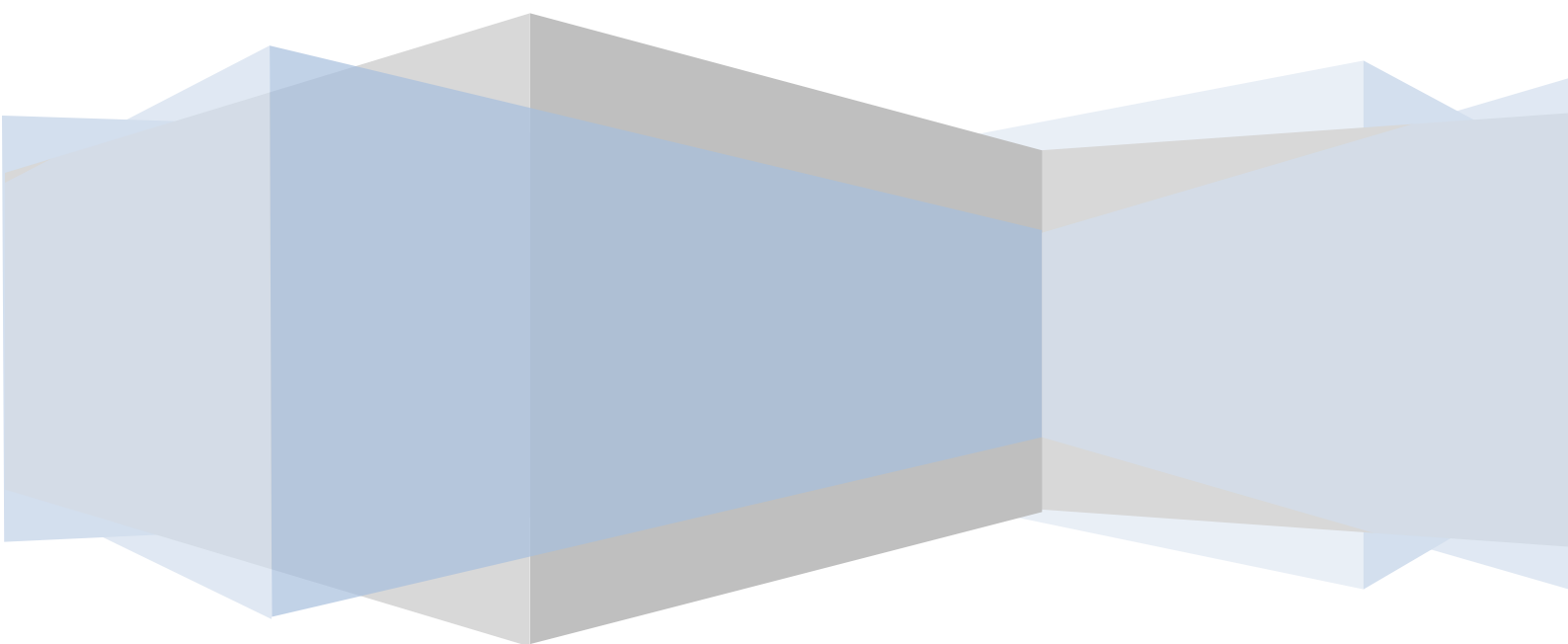




Proven Product, Proven Company

Basic Edition Multi-Page Scanning

Setup Guide



INTRODUCTION

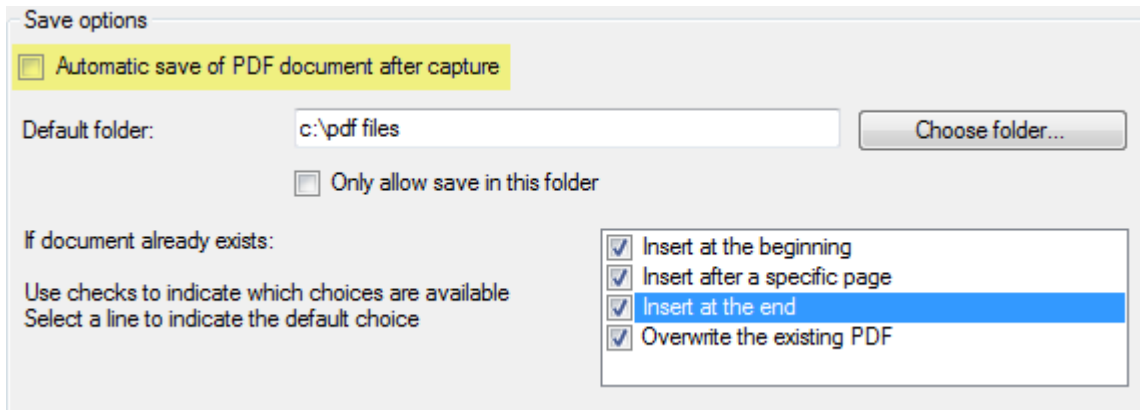
Thank you for your interest in the ScanToPDF Home User Version. This version is intended for scanning using Flatbed scanners and scans a single page at a time (each time the Scan button is pressed). This guide is intended to explain the necessary configuration for scanning multi-page documents using the Home User Version.

HOW TO CONFIGURE THE REQUIRED SETTINGS

All the settings are configured through a single menu

- Start ScanToPDF
- Click Edit
- Click Options
- Click the “Save” ICON

SAVE OPTIONS



Make sure the “Automatic save of PDF document after capture” option is NOT checked (highlighted above in Yellow)

OTHER SETTINGS

All other settings can be set as required by the user and will not affect the multi-page scanning operation.
Please contact OiC if you have any other questions.

OPERATION

Press Scan to scan each page (one at a time) until you have the required pages to make up your document. When you have all the pages press Save and save the PDF document.